

4. (a) Sketch the curve with equation

$$y = \frac{k}{x} \quad x \neq 0$$

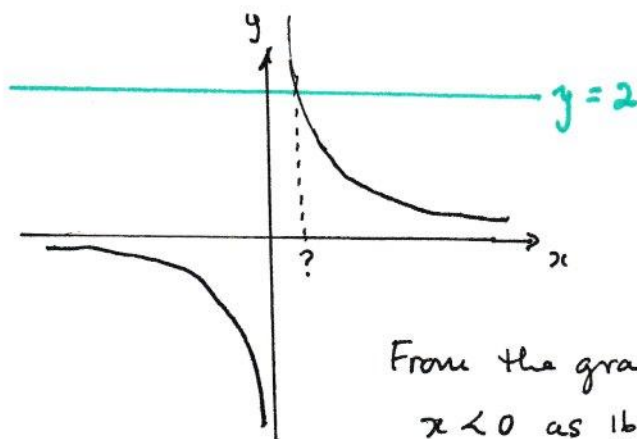
where k is a positive constant.

(2)

- (b) Hence or otherwise, solve

$$\frac{16}{x} \leq 2$$

(3)



From the graph $\frac{16}{x} \leq 2$ when
 $x < 0$ as $\frac{16}{x}$ is less than zero

$\frac{16}{x}$ is also ≤ 2 the right of the dotted line shown.
 The dotted line is when $\frac{16}{x} = 2$ i.e. when $x = 8$

So the solution is $x < 0$ or $x \geq 8$

DO NOT WRITE IN THIS AREA

DO NOT WRITE IN THIS AREA

DO NOT WRITE IN THIS AREA

